
SHOWS
MUSICALS
COMEDY
LAUNCHES
DANCE

THEATRE OF MARCELLUS



EMPERORS
PALACE

THE PALACE OF DREAMS





ABOUT/

True to its name, the theatre is fit to provide guests with memories worthy of an esteemed Roman general.

One thousand theatregoers can enjoy show-stopping entertainment in the 17 tiered auditorium from lavish seating with exceptional lines of sight. VIP seating is also available for revered guests.

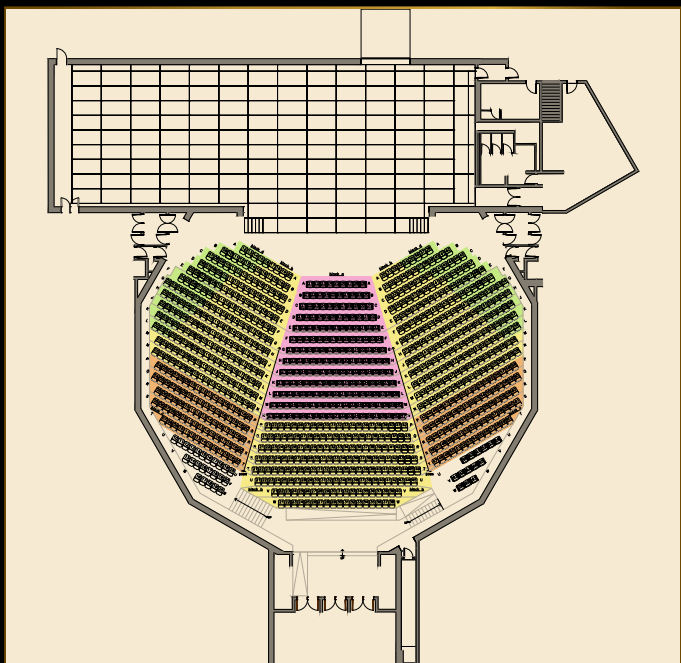
Numerous international as well as local acts have graced the stage at the Theatre of Marcellus at Emperors Palace, including dance shows, musicals and award-winning plays.

Every empire craves quality entertainment and to ensure that the experience at the Theatre of Marcellus at Emperors Palace remains nothing short of spectacular regular upgrades and renovations guarantees that this world-class theatre remains one of Gauteng's finest.



VENUE PLAN/

The Theatre's capacity is 1007 with the standard structure as per the below illustration. However, it can be customised per event.



NOTABLE EVENTS/

The Theatre of Marcellus has played host to a spectacle of local and international performers ranging from one-man shows to comedies to elaborate stage productions.

Over the years we have been privileged to share the stage with the likes of:

- Household children's brand name production shows like Dora the Explorer and Smurfs
- The best of local Theatre such as Nataniël, Fiela se Kind and pantomimes
- South Africa's Music and Comedy legends
- Local and International Tribute shows
- International music acts like Imogen Heap and Tori Amos
- Annual Beauty Pageants like Mrs SA and Miss Million Dollar
- Annual Royal Moscow Ballet performances



TARGET MARKET/

Emperors Palace marketing efforts are focused primarily on targeting guests from South Africa, and specifically in the local geographical catchment areas around the resort – drawing its guests typically within a radius of approximately 75km.



It is estimated that at least 80% of the footfall is drawn from our local catchment areas, but also further afield, with a robust Privé business drawing customers from further afield such as Mozambique and Angola. The Entertainment market is made up of English, Afrikaans, Indian, Mediterranean, Chinese and a fast growing black market.

TECHNICAL SPECS/

<p>STAGE</p>	<p>The modular stage is made up of 2,400mm x 1,200mm rostrums with a height of 900mm.</p> <p>The nominal stage width is 33,600mm (+500mm filler section) and the stage depth is 10,800mm with 1,200mm or 2,400mm apron extension.</p> <p>The proscenium opening is 15,160mm wide by 10,000mm high (deduct height of stage for proscenium opening).</p>
<p>POWER</p>	<p>DB 1 – STAGE RIGHT (Prompt) – Catwalk Level</p> <p>1 x 600Amp Supply with the following outlets:</p> <ul style="list-style-type: none"> • 1 x Camlock Output 3 Phase with Neutral and Earth with a 250amp Triple Pole Circuit Breaker (TPCB) • 1 x 125amp Cee Form 5 Pin Outlet (3 phase + N + E) fed with 125amp TPCB • 2 x 63amp Cee Form 5 Pin Outlets (3 phase + N + E) fed with individual 63 A TPCB • 2 x 32amp Cee Form 5 Pin Outlets (3 phase + N + E) fed with individual 32 A TPCB <p>DB 2 – STAGE LEFT (OP) – Catwalk Level</p> <p>1 x 400amp Supply with 400amp Main Circuit Breaker and Camlock Output 3 Phase with N+E.</p> <p>DB 3 – Main Stage – Stage Left (OP) – Stage Level</p> <p>Throughout the venue there are 32amp and 63amp Outlets with Cee Form Connectors. All running from the main DB.</p>
<p>ACCESS</p>	<p>Access for scenery is through a 4m wide x 4m high (from auditorium ground level – deduct stage height) roller shutter door located up-stage, stage left.</p> <p>A scissor lift is available to bring décor in at auditorium floor level; however, part of the stage must be removed to do this.</p> <p>The scissor lift is located at the main roller shutter door and enables items to be rolled onto the lift at exterior ground level and lifted up to stage level.</p>

TECHNICAL SPECS/

MECHANICAL

20 x Scenery Bars (Including Front Tabs)

- Bar Capacity – 350Kg
- Bar Length – 17,6m
- Bar Travel – 11,15m
- Maximum Height 11,4m Above Rostrum Stage (Set at 950mm)

3 x Lighting Bars (On Winch Sets)

- Bar Capacity – 600Kg
- Bar Length – 17,6m
- Bar Travel – 9,7m
- Maximum Height 11,4m Above Rostrum Stage (Set at 950mm)

2 x Side Lighting Bars (Under gallery Winch Sets) – 1 per side

- Bar Capacity – 600Kg
- Bar Length – 10m
- Bar Travel – 5m
- Maximum Height 5m Above Rostrum Stage (Set at 950mm)

4 x Side Stage Storage Bars

- Bar Capacity – 600Kg
- Bar Length – 8,16m
- Bar Travel – 9,7m
- Maximum Height 11,2m Above Rostrum Stage (Set at 950mm)

8 x Auditorium Side Wall Bars

- Bar Capacity – 200Kg
- Bar Length – 8,14m Nominal
- Bar Travel – 7m
- Maximum Height 8,3m Above Auditorium Floor Level

1 x Front Tab Track (Can be repositioned on any bar)

- Handline operated to allow for adjustable curtain drop
- Overall Track Length – 17,5m Centre Meeting, 300mm Overlap

2 x Under Gallery Curtain Track (1 per side)

- Side Swipe Hand Operated
- Overall Track Length – 10,86m

TECHNICAL SPECS/

AUDIO

L'Acoustic Kiva

The sound system is a stereo system

FOH Desk

Digico SD9 running Core2 firmware

External processing: Waves Server One (Waves Multirack on board SD9)

Inputs on stage 48 mic/line inputs (Digico D2-Rack)

Outputs on stage 16 line outputs and 4 AES outputs (Digico D2-Rack)

Inputs at FOH: 40 mic/line inputs and 2 AES inputs (Digico D-Rack + Console Local)

Outputs at FOH: 16 line outputs and 2 AES outputs (Digico D-Rack + Console Local)

Monitor System

8 x Nexo PS 15's

8 x EV SAT 22's

4 x EV SX 300's

Monitor AMPS

4 x Camco 8

1 x Qsc 2000

2 x Crown 2400

8 x Aux sends to stage

Full EQ across each Aux send

Microphones

16 x Boom Microphone Stands

4 x Senheizer E300 receivers

4 x Senheizer E300 Handhelds

4 x Synthesizer E300 Belt packs

2 x Shure SM58 Cable Mic's

3 x Shure SM57 Cable Mic's

3 x EV200's

16 x DBX DI Boxes

TECHNICAL SPECS/

LIGHTING

- 1 x Grand MA Light
- 160 x Luminaries - Parcan 1000w
Spun Aluminum
- 22 x ETC Source 4 26°
- 26 x Zoom Profiles ETC Source 4 –
15 deg. – 30 deg.
- 2 x Le Maitre MVS Hazers
- 1 x Jem ZR44 Smoke Machine
- 12x Robe DLX Spot automated units
- 8 x Robe 250 Wash automated units
- 10 x Martin MX 10 automated units
- 2 x 2000 Watt LDR Canto Follow Spots
- 2 x Strong Truss Trouper Follow spots -
Long Throw
- 4 x UV Boosters
- 6x Longman LED Strips

Fibre Optic Curtain

1 x Fibre Optic Curtain Comprising Of 6 Sections –
3m Wide X 6m High

Auditorium Houselights

The auditorium houselights are dimmable in 3 circuits, inner catwalks, outer catwalk, wall feature lights. The houselights can be operated from the control booth, or from the Stage Managers Desk prompt side

Auditorium And Stage Working Lights

All stage and auditorium working lights are controlled from the Stage Managers desk prompt side. If required, individual lights can be isolated and switched off. The working light switch panel divided the theatre into working areas, auditorium catwalks, loading catwalk, grid, stage etc. Floodlights are available for working light and Blue lights are available for show conditions.

TECHNICAL SPECS/

VIDEO

The theatre has the following Audio Visual Equipment available:

- 2 x Portable Motorized Projection Screens – 4m Wide x 3m High with an additional 500mm Top Drop
- 1 x Kramer Seamless Switcher/ Scaler - VP-724 DS-220V
- 1 x Kramer VP-200 DXL
- 2 x Panasonic EX600E 6000 ANSI Lumens

Softs

- 10 x Black Legs – 2.5m x 6m
- 5 x Borders 18m x 1.8m
- 2 x Split Traverse 9,5m x 6m (ie x 4 Drops)
- 2 x Stage Front Skirts 12m x 95cm (Attached by Velcro)
- 2 x Stage Front Skirts 6m x 95cm (Attached by Velcro)
- 12 x Catwalk Borders 8m x 1,5m
- 12 x Catwalk Borders 4m x 1,5m
- 1 x Split Main Curtain 2 x 9,5m x 5,5m
- 1 x Main Curtain Border 18,5m x 3,5m

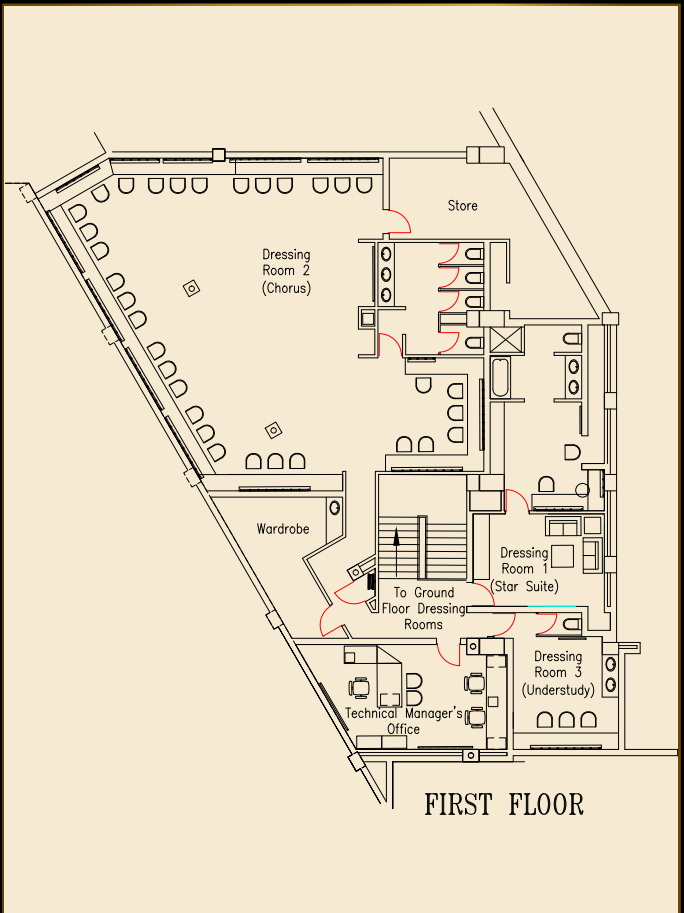
5 DRESSING ROOMS/

Ground Floor:

- Dressing Room 4 – Smaller Chorus Dressing Room – 16 Pax
- Dressing Room 5 – Understudy Dressing Room

First Floor:

- Dressing Room 1 – Star Suite
- Dressing Room 2 – Large Chorus Dressing Room – 32 Pax
- Dressing Room 3 – Understudy Dressing Room



CONTACT/

Irvin Nkosi

Promotions and Entertainment Manager

011 928 1332

INkosi@emperorspalace.com

